

STEM RESEARCH CENTER

We envision a world in which **evidence** from
research and **wisdom** from practice

guide **all learning**
experiences.

This brochure can be made available in an accessible
format upon request. Please contact Jessica Sawyer,
541-737-2197 or stem.contact@oregonstate.edu.

STEM RESEARCH CENTER

STEM Research Center
254 Gilbert Hall | Oregon State University
Phone: 541-737-2197

stem.oregonstate.edu
Follow us on Twitter @OSU_STEM



Supporting learning throughout the lifespan



STEM LEARNING IS FOR EVERYONE

The **STEM Research Center** (formerly The Center for Research on Lifelong STEM Learning) at Oregon State University was established in 2012. The Center's mission is to conduct applied research with a broad range of partners and nurture communities toward improved systems of learning for all.

Central to the Center's work is its commitment to social justice by supporting equity, access, inclusion, and broadening participation in STEM. The Center infuses these considerations into each of its projects and is building a portfolio specifically dedicated to these goals.

With over 25 projects and more than \$7 million in funding, our Center continues to grow. We look towards the future of STEM teaching and learning in a changing landscape, and supporting the innovation and implementation of evidence-based practice through empirical research.

OUR PROJECTS MAKE AN IMPACT

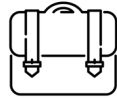
The Center's work is distributed across local, regional, and national projects with a portfolio of applied research, evaluation, initiatives, and services that are highly collaborative and partnership-driven. We investigate phenomena and progress in five critical areas:



Institutional Transformation



Interface of Science and Society



Professional Learning and Growth

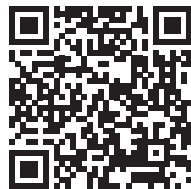


STEM Teaching and Learning



Learning Ecosystems

Scan the QR code to read more about our projects



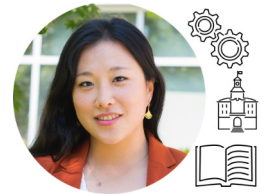
SENIOR RESEARCHERS



Kari O'Connell,
Ph.D. Forestry/Soils



Nancy Staus
Ph.D. Science Education



Holly Cho
M.S. Biology & Life Sciences Communication



Kelly Riedinger
Ph.D. Curriculum and Instruction/Science Education



Kimberley Preston
M.S. Environmental Sciences /Education



Heather Fischer,
Ph.D. Geography



Ann Sitomer
Ph.D. Mathematics Education



Kelly Hoke
M.S. Human Development & Family Studies

RESEARCHERS

ADMINISTRATORS



Julie Risien
Associate Director
Ph.D. Environmental Sciences



Martin Storksdieck
Director
Ph.D. Education



Kim Phipps
Grants & Contracts Coordinator
M.S. Finance



Jessica Sawyer
Public Information Assistant
B.S. Psychology